

BAY51-Series Explosion-proof Light Fittings For Fluorescent Lamp

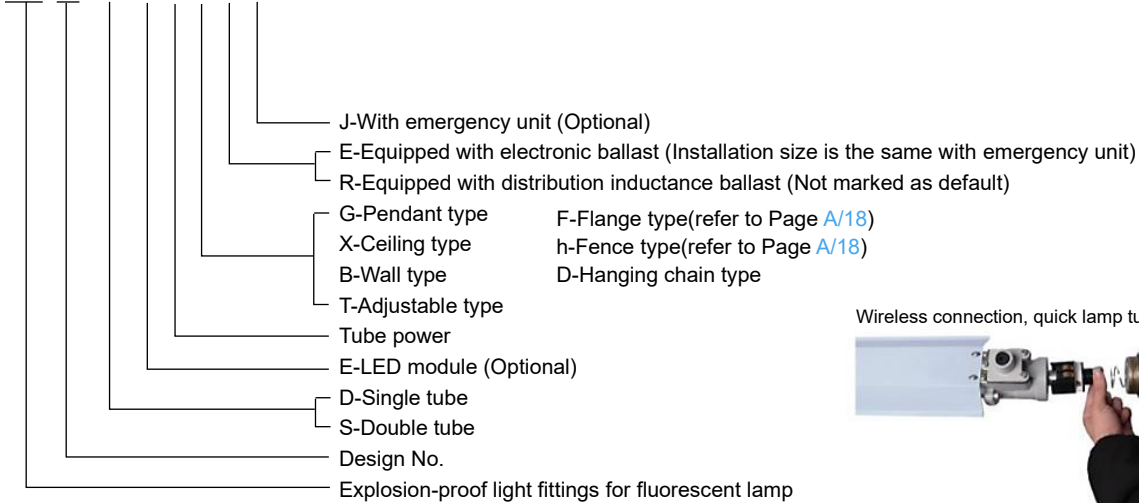
1 Application and Features

- Explosion protection
 - China Ex(GB)
- Application in hazardous area
 - Zone 1 and Zone 2
 - Zone 21 and Zone 22
- Light source and power:
 - Fluorescent tube: 18W, 36W
 - LED tube: 9W, 18W
- Two types of enclosures:
 - fluorescent tube 18WX1, LED module 9WX1
 - fluorescent tube 18WX2, LED module 9WX2
 - fluorescent tube 36WX1, LED module 18WX1
 - fluorescent tube 36WX2, LED module 18WX2
- Fluorescent tube or LED module are equipped when delivery.
- Special structure, quick lamp tube replacement.
- Emergency unit can be equipped upon request. Single tube working for emergency.



2 Nomenclature

BAY 51 - □ - □ □ □ □ □ □

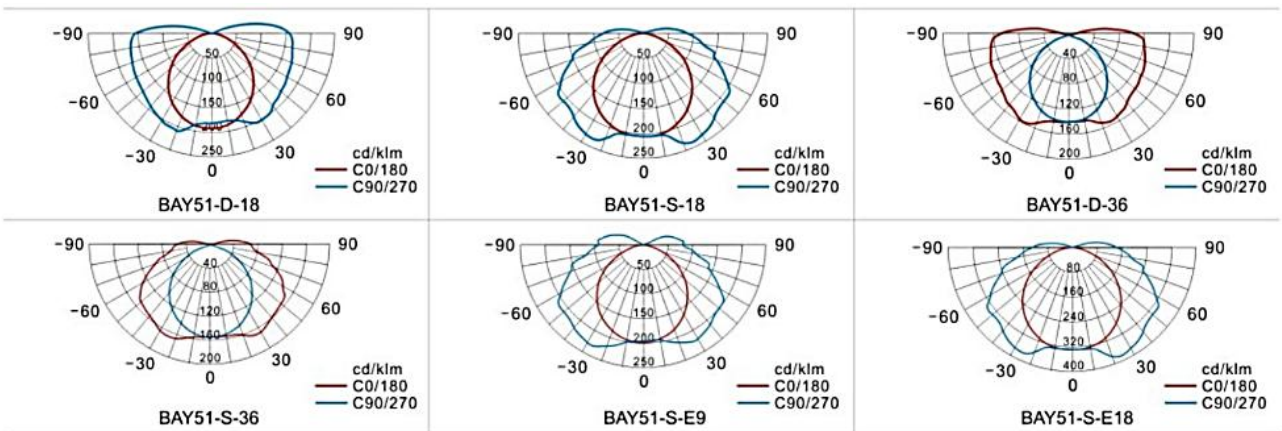


Wireless connection, quick lamp tube replacement



Note: Emergency unit power is only for a single tube.

3 Luminous distribution curve



BAY51-Series Explosion-proof Light Fittings For Fluorescent Lamp

4 Technical Parameter

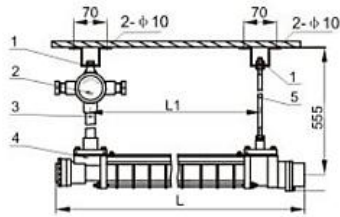
Ex marking	Gas	Ex d e IIB T6/T5 Gb			
	Dust	Ex tD A21 IP66 T80/T95°C			
Conformity to standards		GB3836.1,GB3836.2,GB3836.3,GB3836.9,GB12476.1,GB12476.5			
Structure, Material	Enclosure	Alluminum alloy enclosure, powder coated, industrial gray, with dark lines texture (RAL7035)			
	Protective grid	Steel wire powder coated(white), or stainless steel			
	Tube Replacing	Special structure, quick lamp tube replacement. Lamp can be set to adjustable mode by requirement, easy to release one side to replace light tube.			
	Ballast	The fluorescent lamp is an inductive ballast			
	LED tube	Long serves life, energy saving, power factor ≥ 0.98 , wide voltage input (180 ~ 265vac), constant power output, with constant current, open circuit, short circuit protection function			
	Emergency unit	Explosion-proof emergency unit, when the power supply is off, the lamp will automatically switch to the emergency lighting state			
	Exposed fastener	Stainless steel			
Light source	Specification	T8 fluorescent tube		T8 LED tube	
	Power (W)	18WX1	18WX2	9WX1	9WX2
		36WX1	36WX2	18WX1	18WX2
	Ex marking	Ex d e IIB T5 Gb		Ex d e IIB T6 Gb	
Ex tD A21 IP66 T95°C		Ex tD A21 IP66 T80°C			
Rated voltage		T8 fluorescent tube: 220V AC, 50/60Hz T8 LED tube: 185~265V AC, 50/60Hz			
Degree of protection		IP66			
Ambient temperature		-20°C ~ +40°C			
Terminal block		3x1.5 ~ 4mm ² (L+N+PE)			
Cable entries		2-G1/2, 2-G3/4(Optional)			
Available cable outer diameter (mm)		G1/2: $\phi 8 \sim \phi 10$ (mm), G3/4: $\phi 10 \sim \phi 14$ (mm)			
Emergency unit technical parameters	Emergency unit	Dedicated emergency controller and battery pack, with with protection functions of overcharge and overdischarge.			
	Emergency power (W)	T8 fluorescent tube: 18WX1,36WX1 T8 LED tube : 9WX1,18WX1			
	Emergency starting time	0.3s			
	Charging time	24h			
	Emergency lighting time	90min			

5 Selection Table

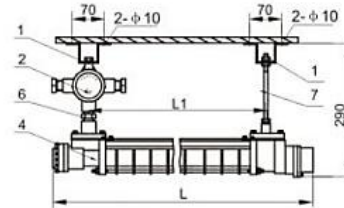
LED lamp			T8 fluorescent lamp		
Type	Power(W)	Weight (kg)	Type	Power(W)	Weight (kg)
BAY51-D-E9G	9	3.8	BAY51-D-18G	18	4.3
BAY51-D-E9X	9	3.1	BAY51-D-18X	18	3.6
BAY51-D-E9B	9	3.4	BAY51-D-18B	18	3.8
BAY51-D-E9T	9	3.5	BAY51-D-18T	18	4.0
BAY51-D-E9D	9	3.2	BAY51-D-18D	18	3.7
BAY51-S-E9G	9X2	6.0	BAY51-S-18G	18X2	7.0
BAY51-S-E9X	9X2	5.2	BAY51-S-18X	18X2	6.2
BAY51-S-E9B	9X2	5.5	BAY51-S-18B	18X2	6.5
BAY51-S-E9T	9X2	5.6	BAY51-S-18T	18X2	6.6
BAY51-S-E9D	9X2	5.3	BAY51-S-18D	18X2	6.3
BAY51-D-E18G	18	5.4	BAY51-D-36G	36	5.9
BAY51-D-E18X	18	4.7	BAY51-D-36X	36	5.2
BAY51-D-E18B	18	5.0	BAY51-D-36B	36	5.5
BAY51-D-E18T	18	5.1	BAY51-D-36T	36	5.6
BAY51-D-E18D	18	4.8	BAY51-D-36D	36	5.3
BAY51-S-E18G	18X2	8.9	BAY51-S-36G	36X2	9.9
BAY51-S-E18X	18X2	8.1	BAY51-S-36X	36X2	9.1
BAY51-S-E18B	18X2	8.4	BAY51-S-36B	36X2	9.4
BAY51-S-E18T	18X2	8.5	BAY51-S-36T	36X2	9.5
BAY51-S-E18D	18X2	8.2	BAY51-S-36D	36X2	9.2

BAY51-Series Explosion-proof Light Fittings For Fluorescent Lamp

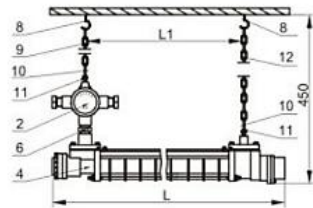
6 Outline and Installation Dimension (Dimensions in mm)



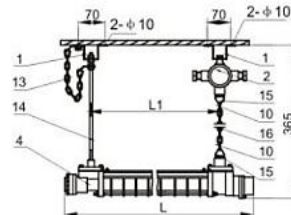
Pendant type(G)



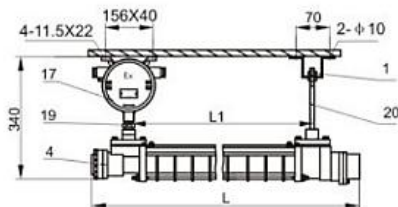
Ceiling type(X)



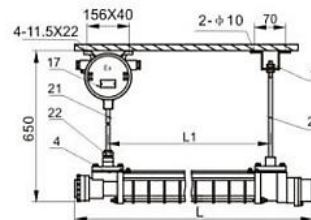
Hanging chain type(D)



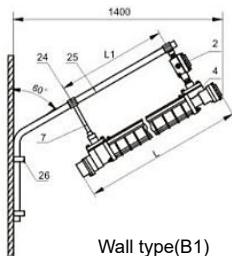
Adjustable type(T)



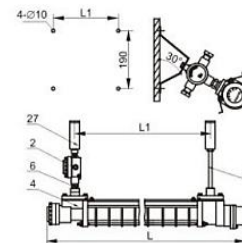
Ceiling type(X) with emergency unit



Pendant type(G) with emergency unit



Wall type(B1)



Wall type(B2)

No.	Item	Remark
1	Mounting bracket	
2	Explosion-proof terminal box	BAY51-AH
3	G1/2 Steel pipe	Length: 300mm
4	BAY51-(E) Series Explosion proof Light Fittings for Fluorescent Lamp	
5	M8 screw rod	Length: 400mm
6	Explosion-proof pipe joint	G1/2 male - G1/2 male
7	M8 screw rod	Length: 140mm
8	Hook	Provided by user
9	Chain	Length: 180mm
10	Clasp	
11	Eyebolt	
12	Chain	Length: 180mm
13	Chain	Length: 500mm, with claspX2, mounting footX2
14	M8 screw rod	Length: 320mm
15	Compression nut	G1/2, with hook
16	Chain	Length: 58mm
17	Explosion-proof emergency unit	
18	Steel pipe	G1/2
19	Explosion-proof pipe joint	G1/2 male - G3/4 male
20	M8 screw rod	Length: 200mm

Type	Size(mm)	
	L	L1
BAY51-D-18(E9)(J)	797	615
BAY51-S-18(E9)(J)		
BAY51-D-36(E18)(J)	1407	1225
BAY51-S-36(E18)(J)		

No.	Item	Remark
21	G3/4 Steel pipe	Length: 300mm
22	Explosion-proof pipe joint	G1/2 male - G3/4 female
23	M8 screw rod	Length: 500mm
24	Pipe clamp	G11/4
25	Wall type pole	
26	Fixed pipe clamp G11/4	Provided by user
27	Mounting bracket (90°)	

BAY51-Series Explosion-proof Light Fittings For Fluorescent Lamp

7 Accessories list

The installation accessories required by different installation methods see the table below; Manufacturer does not provide when marked "provided by user"

Installation Method	Item	Remark	Qty	Purchase code	Weight (kg)
G1-Pendant type	Mounting bracket		2	2. 14. 0706051	0. 48
	Explosion-proof terminal box	BAY51-AH	1	1. 02. 901. 00150	0. 85
	G1/2 Steel pipe	Length: 300mm	1	4. 02. 901. 0111	0. 28
	M8 screw rod	Length: 400mm	1	2. 19. 1208251	0. 12
X-Ceiling type	Mounting bracket		2	2. 14. 0706051	0. 05
	Explosion-proof terminal box	BAY51-AH	1	1. 02. 901. 00150	0. 85
	Explosion-proof pipe joint	G1/2male-G1/2male	1	2. 12. 1100007	0. 05
	M8 screw rod	Length: 140mm	1	2. 19. 1208206	0. 04
D-Hanging chain type	Explosion-proof terminal box	BAY51-AH	1	1. 02. 901. 00150	0. 85
	Explosion-proof pipe joint	G1/2male-G1/2male	1	2. 12. 1100007	0. 05
	Hook	Provided by user	2		/
	Chain	Length: 180mm	1	2. 14. 1000101	0. 06
	Clasp		2	2. 18. 1604091	0. 01
	Eyebolt		2	2. 18. 1100021	0. 02
	Chain	Length: 300mm	1	2. 14. 1000101	0. 09
T-Adjustable type	Mounting bracket		2	2. 14. 0706051	0. 05
	Explosion-proof terminal box	BAY51-AH	1	1. 02. 901. 00150	0. 85
	Clasp		2	2. 18. 1604091	0. 01
	Chain	Length: 500mm	1	2. 14. 1000101	0. 28
	M8 screw rod	Length: 320mm	1		0. 1
	Compression nut	G1/2, with hook	2		0. 05
	Chain	Length: 58mm	1	2. 14. 1000101	0. 03
X-Ceiling type with emergency unit	Mounting bracket		1	2. 14. 0706051	0. 05
	Explosion-proof emergency unit		1	1. 02. 601. 00101	2. 8
	Explosion-proof pipe joint	G1/2 male - G3/4 female	1	2. 12. 1100401	0. 08
	M8 screw rod	Length: 200mm	1	2. 19. 1208206	0. 06
G1-Pendant type with emergency unit	Mounting bracket		1	2. 14. 0706051	0. 05
	Explosion-proof emergency unit		1	4. 02. 901. 0113	2. 8
	G3/4 Steel pipe	Length: 300mm	1	4. 02. 901. 0113	0. 31
	Explosion-proof pipe joint	G1/2male-G3/4male	1	2. 12. 1100401	0. 09
	M8 screw rod	Length: 500mm	1	2. 19. 1208266	0. 15
B1-Wall type	Explosion-proof terminal box	BAY51-AH	1	1. 02. 901. 00150	0. 85
	M8 screw rod	Length: 140mm	1	2. 19. 1208206	0. 05
	Pipe clamp	G11/4	2	2. 12. 5900010	0. 11
	Wall type pole G11/4		1	4. 02. 901. 0141(18W) 4. 02. 901. 0141(36W)	/
	U pipe clamp G11/4	Provided by user	2		/
B2-Wall type	Explosion-proof terminal box	BAY51-AH	1	1. 02. 901. 00150	0. 85
	Explosion-proof pipe joint	G1/2male-G1/2male	1	2. 12. 1100007	0. 05
	M8 screw rod	Length: 140mm	1	2. 19. 1208206	0. 05
	Mounting bracket (30°)		1	2. 14. 0706001	0. 35